



17a Glendale Crescent

Offers Over £65,000

🛏 1 🚿 1 🚗 1

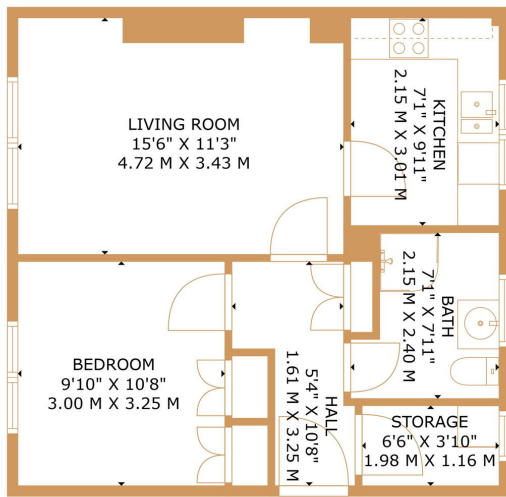


Highly sought after 1 bedroom ground floor flat, located in a popular residential area of Ayr. This property would suit a range of potential purchasers - first time buyer, buy to let or downsizing. The property offers a spacious layout with generous proportions, driveway in front enclosed garden, rear garden and high rental demand in the area.

The property comprises; Entrance hall, bright and spacious front facing lounge, fitted kitchen with excellent storage, one double bedroom, 3 piece bathroom comprising a shower cubicle, WC and vanity sink unit with plenty of storage space. Gas central heating and double glazing is fitted throughout.

Demand for flats within this location remains extremely high therefore early viewing is recommended.

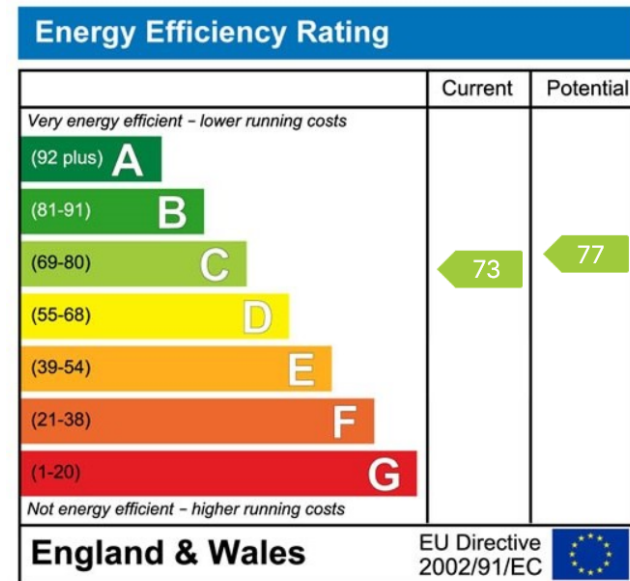




- Popular location
- Seldom available
- Ideal first time buyer or buy to let property
- Council Tax Band A
- 1 bedroom ground floor flat
- Driveway to front
- Close to Belmont Academy
- EPC Rating Band C



TOTAL: 474 sq. ft., 44 m²
 FLOOR 1: 474 sq. ft., 44 m²
 EXCLUDED AREAS: STORAGE: 25 sq. ft., 2 m²; UNDEFINED: 10 sq. ft., 1 m²
 SIZES AND DIMENSIONS ARE APPROXIMATE. ACTUAL MAY VARY. © FOUR WALLS MEDIA



01292 437 045
 office@belmontproperty.com
 24 Dalmellington Road, Ayr, KA7 2PZ

belmontproperty.com

Agents Note: Whilst every care has been taken to prepare these sales particulars, they are for guidance purposes only. All measurements are approximate and for general guidance purposes only and whilst every care has been taken to ensure their accuracy, they should not be relied upon and potential buyers are advised to recheck the measurements