



Forge Road, Ayr, KA8 9NJ

Offers Over £130,000

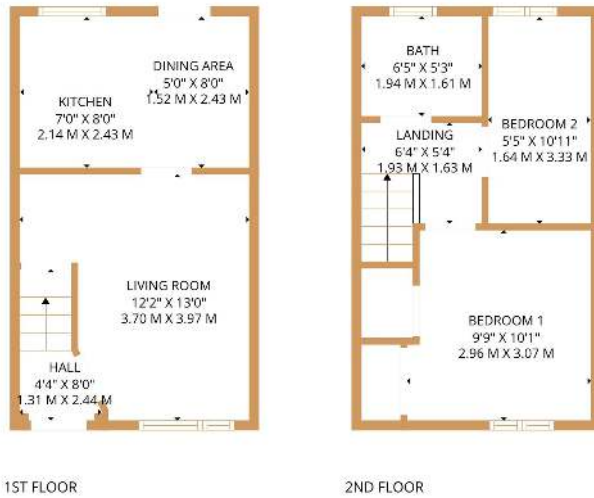
🛏️ 2 🚿 1 🚗 1



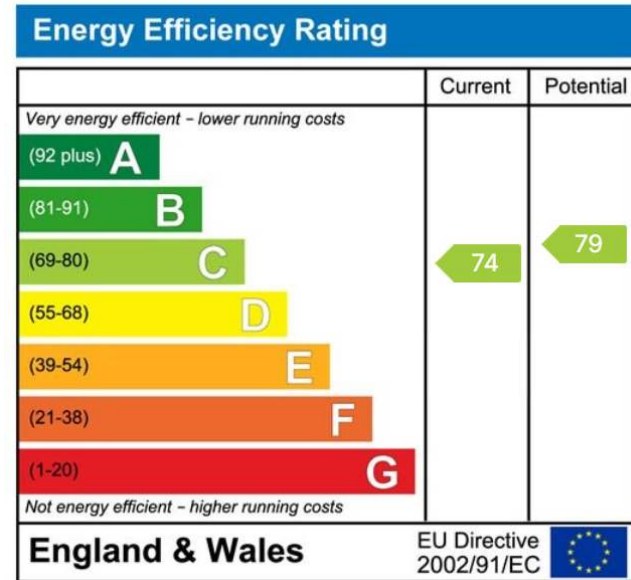
- Two well-proportioned bedrooms
- Sought-after residential location
- Stylish family bathroom
- Quiet family-friendly cul-de-sac
- EPC Rating C (74)
- Terraced villa
- Contemporary fitted kitchen
- Enclosed rear garden
- Private residents' parking
- Council Tax Band C



Located within the highly desirable Heathfield district of Ayr, this beautifully presented two bedroom terraced villa offers modern living in a peaceful cul-de-sac setting.



TOTAL: 520 sq. ft., 48 m²
 1st floor: 290 sq. ft., 27 m², 2nd floor: 260 sq. ft., 24 m²
 EXCLUDED AREAS: WALLS: 46 sq. ft., 4 m²



01292 437 045
 office@belmontproperty.com
 24 Dalmellington Road, Ayr, KA7 2PZ

belmontproperty.com

Agents Note: Whilst every care has been taken to prepare these sales particulars, they are for guidance purposes only. All measurements are approximate and for general guidance purposes only and whilst every care has been taken to ensure their accuracy, they should not be relied upon and potential buyers are advised to recheck the measurements